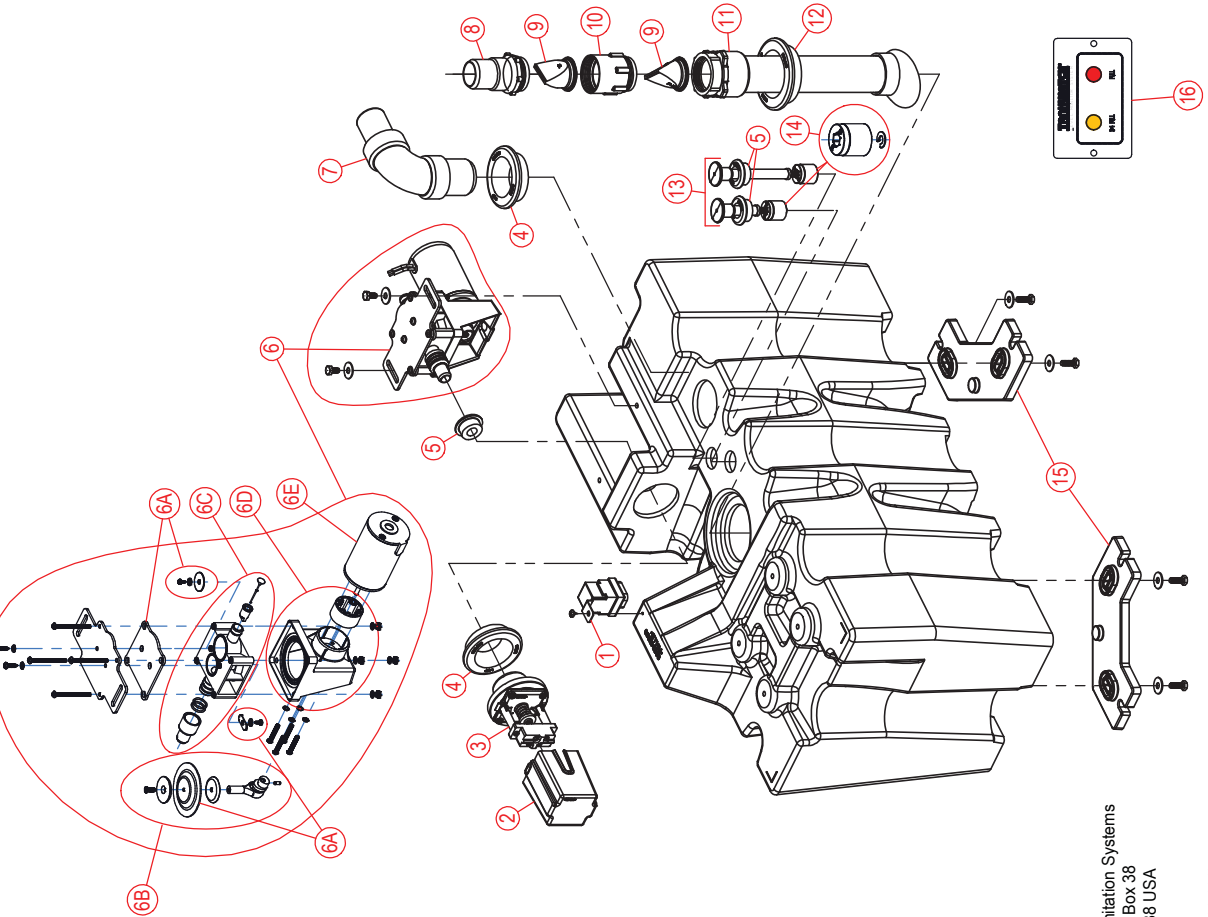


# PARTS LIST: VHT4501 - 317704501



ITEM	PART NUMBER & DESCRIPTION
1	385310842 - SHUTDOWN RELAY ASSY (12vdc)
2	385311420 - VACCUUM SWITCH COVER (BLACK)
3	385311436 - VACUUM SWITCH ASSEMBLY **Includes Item 4.
4	385311111 - 1-1/2" SEALING GROMMET
5	385311164 - 1/2" SEALING GROMMET
6	385311450 - AIR PUMP w/MOTOR (COMPLETE)
6A	385311040 - AIR PUMP VALVE REPLACEMENT KIT
6B	385311442 - ECCENTRIC KIT
6C	385311440 - AIR PUMP BODY REPLACEMENT KIT **Includes Item 6A.
6D	385311438 - MOTOR MOUNTING ASSEMBLY **Includes Items 4B & 4E.
6E	385311439 - MOTOR REPLACEMENT KIT
7	385310635 - 1-1/2" INLET ELBOW FITTING **Includes Item 4.
8	385311315 - 1-1/2" PUMP OUTLET FITTING
9	385310076 - 1-1/2" CHECK VALVE KIT **2pcs per Kit.
10	385311316 - 1-1/2" CHECK VALVE ADAPTER FITTING
11	385311441 - VHT4500 DISCHARGE ASSY FITTING **Includes Item 12.
12	385311110 - 2" SEALING GROMMET
13	385312061 - TANK LEVELS - 3-QTR/FULL SLIP TERMINAL **Includes Item 5.
14	385311103 - TANK LEVEL FLOAT & LOCK RING
15	385311437 - TANK MOUNTING BRACKET **1 per Kit; Includes Mounting Hardware.
16	385311443 - 3-QTR/FULL TANK LEVEL PANEL & HARNESS

Dometic Corporation - Sanitation Systems  
13128 Slate Rt, 226, P.O. Box 38  
Big Prairie, OH 44611-0038 USA  
Telephone: 330-439-5550  
Fax: 330-496-3097  
Email: sealand@dometicusa.com