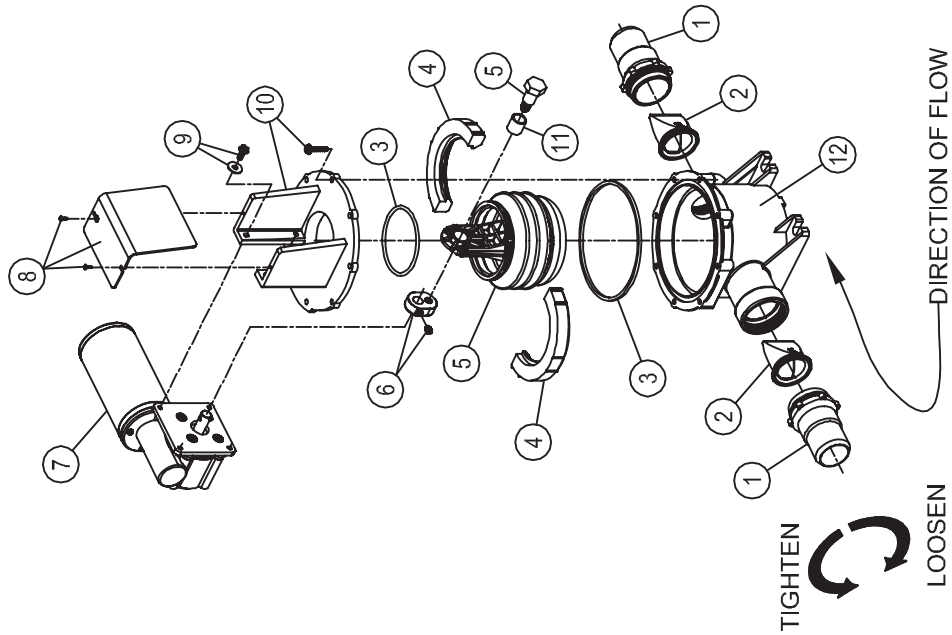


PARTS LIST: TW-DISCHARGE PUMP



ITEM	PART NUMBER & DESCRIPTION
1	385311843 VALVE NIPPLE
2	385310076 1-1/2" DUCKBILL VALVE
3	385310151 O'RING REPLACEMENT KIT
4	385311226 BELLOWS CLAMP KIT
5	385230980 BELLOWS ASSEMBLY **INCLUDES ITEM 11.
6	385310644 ECCENTRIC KIT
7	385311065 12VDC MOTOR 385311066 24VDC MOTOR **INCLUDES ITEM 5.
8	385311422 PUMP COVER KIT
9	385311224 MOTOR MOUNTING HARDWARE
10	385311225 PUMP TOP CLOSURE KIT
11	385310242 BELLOWS BUSHING
12	385311858 PUMP BODY
N/S	385310250 PUMP ASSEMBLY LESS MOTOR **INCLUDES ITEMS 1-6; 8; 10-12

Dometic Corporation - Sanitation Systems
 13128 State Rt. 226, P.O. Box 38
 Big Prairie, OH 44611-0038 USA
 Telephone: 330-496-3211
 Fax: 330-496-3097
 Email: sealand@dometicusa.com