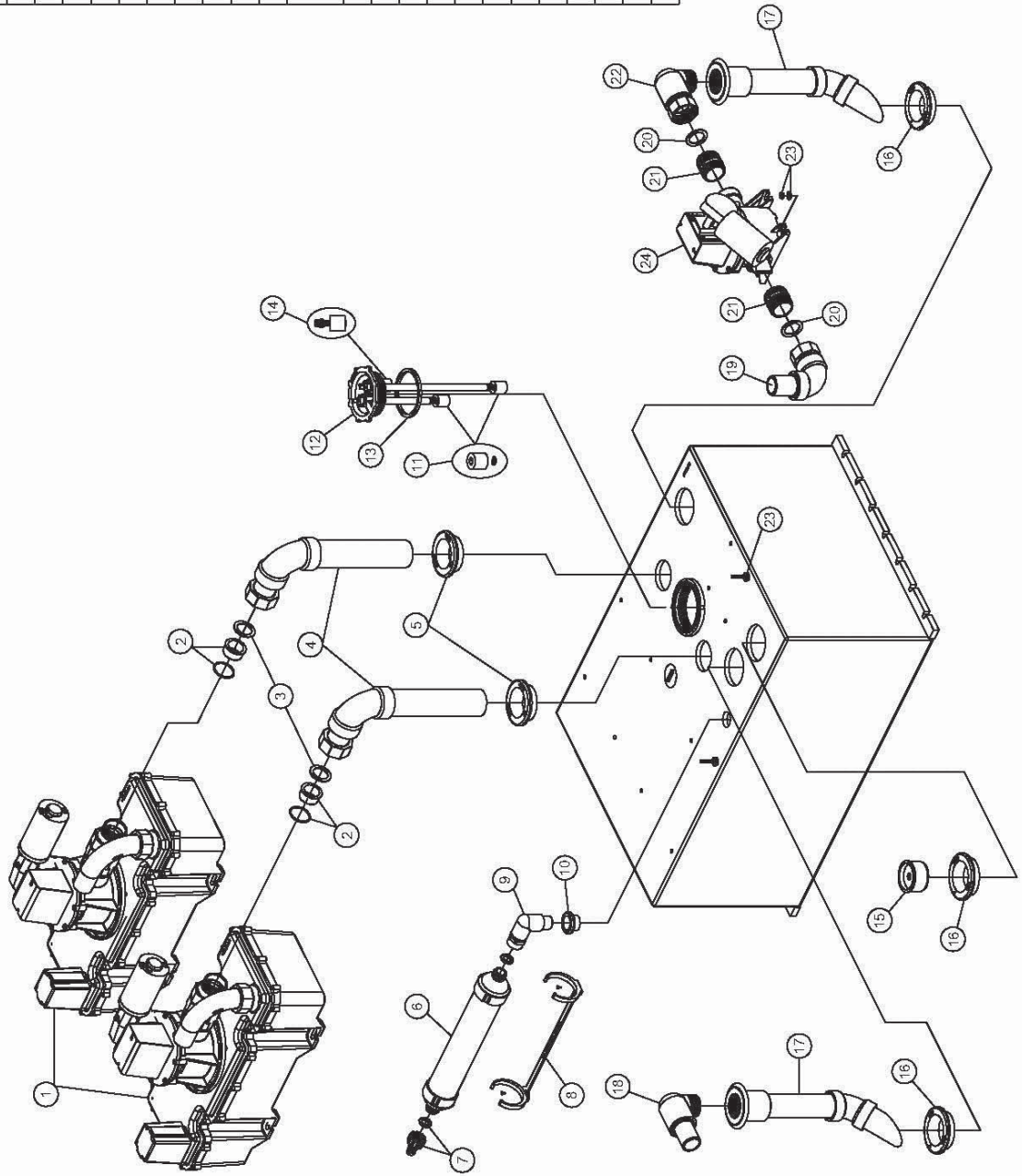


PARTS LIST: 322714012, 322714024

ITEM	PART NO.	DESCRIPTION
1	N/A	SEE LPV G EXPLODED PARTS LIST
2	385311237	KIT, SLIP SEAL ADAPTER V4
3	385311233	KIT, SLIP SEAL 1-1/2" REPL
4	385311306	KIT, V4 INLET (322404005) (inc. items 3 & 5)
5	385311111	KIT, SEALING GROMMET 1-1/2"
6	309310001	HOLDING TANK REPL FILTER
7	385310135	KIT, FILTER INSTALLATION
8	385311106	KIT, VENT FILTER BRACKET
9	385311091	KIT, VENT ELBOW INLET 3/4" (inc. item 10)
10	385311112	KIT, SEALING GROMMET 3/4"
11	385311103	KIT, SWITCH FLOAT & LOCK RING
12*	313000350	TWIMLEVEL CAP w/VENT (inc. item 13)
	385311149	KIT, TW CAP W/O VENT (D) 404DH (inc. item 13)
13	385311250	KIT, TW CAP ORING REPL
14	385230268	KIT, FLOAT SYSTEM (THREADED)
15	313255247	TANKSAVER 1-1/2" (inc. item 16)
16	385311110	KIT, SEALING GROMMET 2"
17	385310660	KIT, DIP TUBE UNIVERSAL (inc. item 16)
18	385311069	KIT, THRD ELBOW W/HOSE ADAPT
19	385310535	KIT, OPTIONAL ELBOW V G II (inc. item 21)
20	385311233	KIT, SLIP SEAL 1-1/2" REPL
21	385640370	KIT, LH RH THREAD ADAPTER
22	385310931	KIT, QUICK CONNECT ELBOW (inc. item 21)
23	385310939	KIT, COMP MTS INSERT HD TANK
24	385310939	SEE PUMP EXPLODED PARTS LIST.

*Models 322404005 and 322404008 have non vented caps.
*Models 322714012 and 322714024 have vented caps.



Dometic Corporation - Sanitation Systems
13128 State Rt. 226, P. O. Box 38
Big Prairie, OH 44611-0038 USA
Telephone: 330-496-3211
Fax: 330-496-3097
Email: sealand@dometicus.com