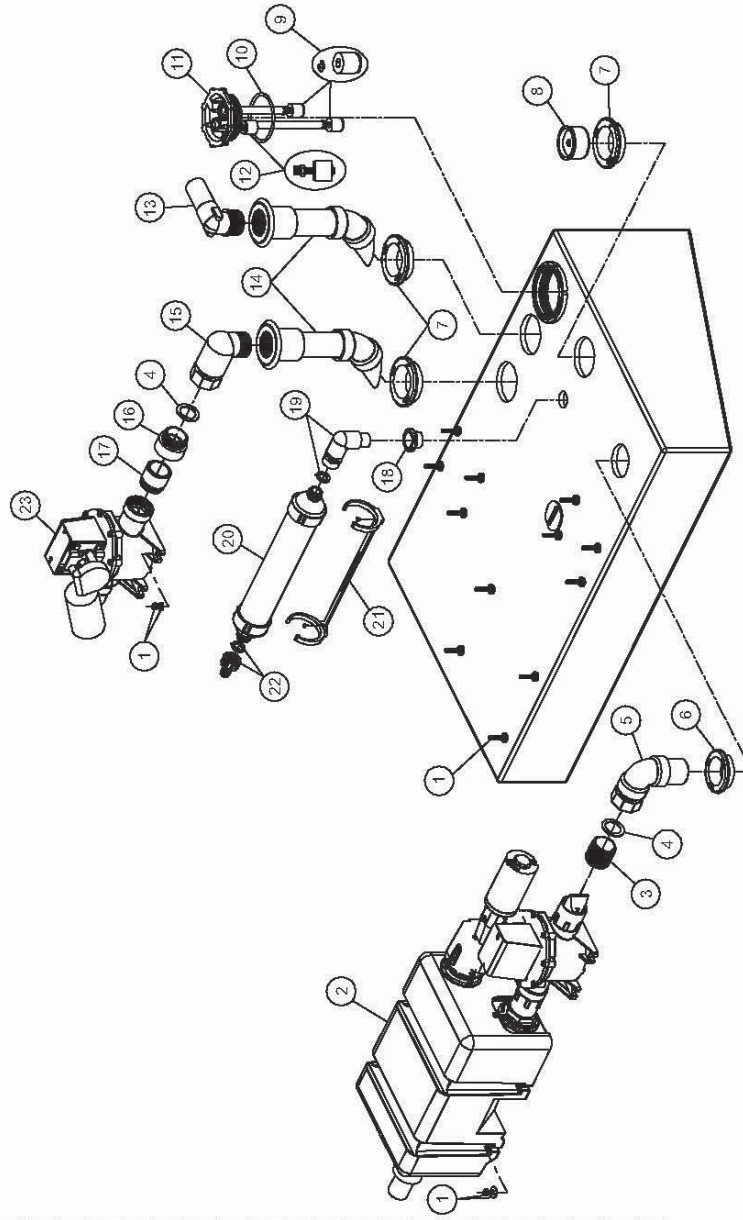


PARTS LIST: MODEL 322722812 & 322722824

ITEM	PART NO.	DESCRIPTION
1	385310939	KIT, COMP MTG INSERT HD TANK
2	317773012	VGLPW12 REAR INLET
3	317773024	VGLPW24 REAR INLET
4	385311272	NIPPLE, 1-1/2" CLOSE
5	385311233	KIT, SLIP SEAL 1-1/2" REPL
6	385311092	KIT, QUICK CONNECT ELBOW (INC. ITEM 4 & 6)
7	385311111	GROMMET, SEALING 1 1/2"
8	385311110	GROMMET, SEALING 2"
9	313255247	TANK SAVER, 1-1/2" (INC. ITEM 9)
10	385311103	KIT, FLOAT AND RING LOCK
11	385311250	KIT, TW CAP ORING REPL
12	313000355	CAP (INCLUDES ITEM 10)
13	385230268	FLOAT/STEM (THREADED)
14	385311233	KIT, 90° ELBOW FITTING
15	385310660	KIT, DIPTUBE (INC. ITEM 7)
16	385310931	QUICK CONNECT ELBOW
17	307341425	ADAPTER, 1-1/2" HUB X MPT
18	385640335	KIT, S-SUMP INLET TANK TO PUMP
19	385311112	KIT, SEALING GROMMET 3/4"
20	385311091	VENT ELBOW INLET 3/4" (INC. ITEM 18)
21	309310001	REPLACEMENT VENT FILTER
22	385311106	VENT FILTER MTG. BRACKET (INC. SCREWS)
	385310135	FILTER INSTALLATION
23	317301200	T-PUMP 12VDC
	317302400	T-PUMP 24VDC



Dometic Corporation - Sanitation Systems
13128 State Rt. 226, P.O. Box 38
Big Prairie, OH 44611-0038 USA
Telephone: 330-496-3211
Fax: 330-496-3097
Email: sealand@dometicusa.com