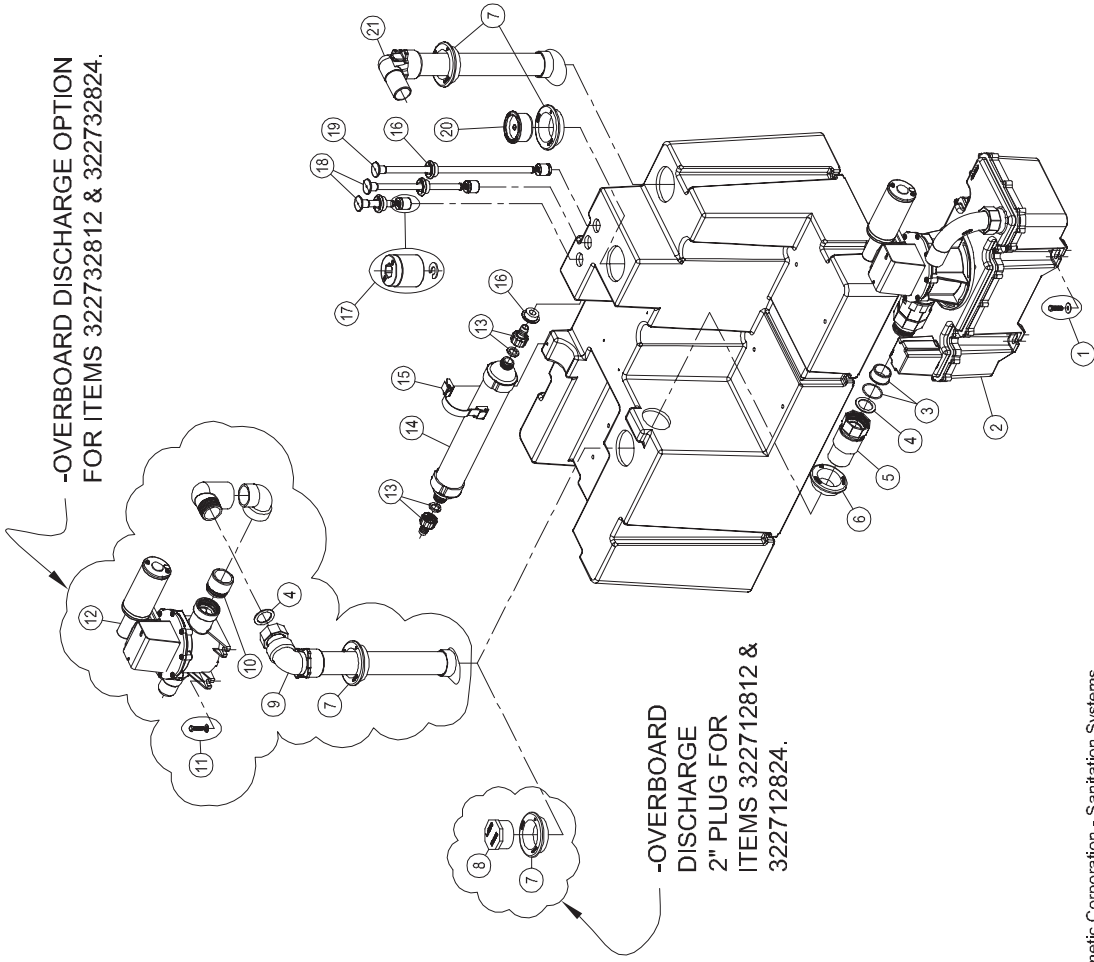


PARTS LIST: 28+ HOLDING TANK SYSTEM / 322712812; 322732812; 322732824

ITEM	PART NUMBER & DESCRIPTION
1	385311275 VG4 MOUNTING HARDWARE
2	N/A VACUUM GENERATOR 4
3	385311237 SLIP SEAL ADAPTER FITTING
4	385311233 1-1/2" SLIP SEAL REPLACEMENT
5	385311236 VG4 HOLDING TANK INLET FITTING **INCLUDES ITEM 4 & 6.
6	385311111 1-1/2" SEALING GROMMET
7	385311110 2" SEALING GROMMET
8	N/A 2" PLUG FITTING
9	385311577 ELBOW DIPTUBE w/SWIVEL NUT **INCLUDES ITEM 4 & 7.
10	385640335 PUMP INLET FITTING
11	385311163 PUMP MOUNTING HARDWARE
12	N/A DISCHARGE PUMP
13	385310135 VENT FILTER FITTINGS
14	309310001 VENT FILTER REPLACEMENT
15	385310673 VENT FILTER MOUNTING KIT
16	385311164 1/2" SEALING GROMMET
17	385311103 TANK LEVEL FLOAT & LOCK RING
18	385311253 TANK LEVELS ADJUSTABLE - 12" **INCLUDES ITEM 16.
19	385311254 TANK LEVELS ADJUSTABLE - 24" **INCLUDES ITEM 16.
20	313255247 TANKSAVER **INCLUDES ITEM 7.
21	385311573 90° ELBOW DIPTUBE ASSEMBLY **INCLUDES ITEM 7.



Dometic Corporation - Sanitation Systems
13128 State Rt. 226, P.O. Box 38
Big Prairie, OH 44611-0038 USA
Telephone: 330-496-3211
Fax: 330-496-3097
E-mail: sealand@dometicusa.com