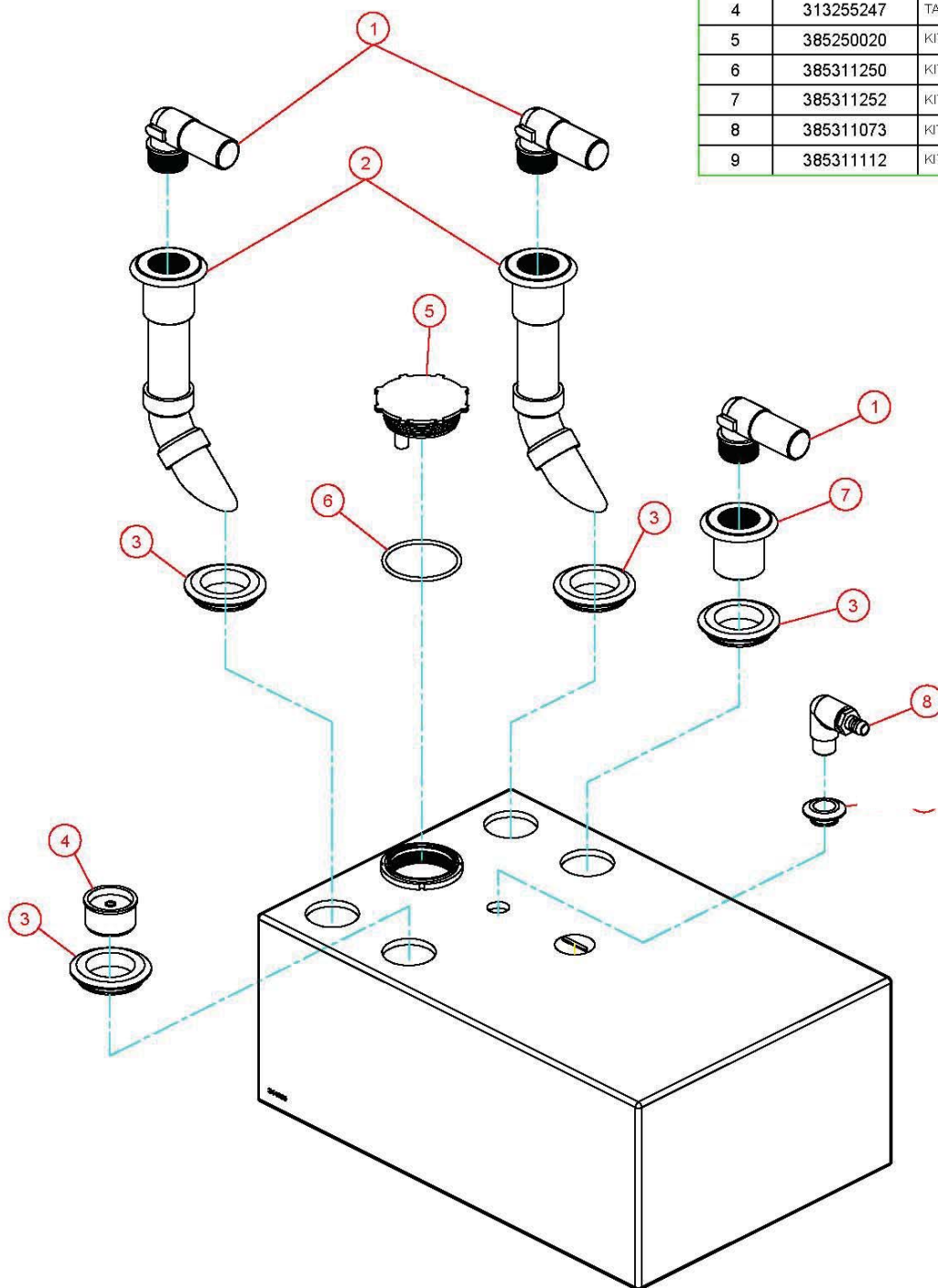


PARTS LIST: MODEL 322840301 HTS BASIC

ITEM	PART NO.	DESCRIPTION
1	385311251	KIT, 90° ELBOW FITTING
2	385311078	KIT, DIPTUBE
3	385311110	KIT, GROMMET SEALING 2"
4	313255247	TANK SAVER, 1- $\frac{1}{2}$ " (includes item 3)
5	385250020	KIT, CAP (includes item 6)
6	385311250	KIT, O-RING 3- $\frac{5}{8}$ " OD X $\frac{3}{16}$ "
7	385311252	KIT, FLANGED ADAPTER FITTING
8	385311073	KIT, VENT ELBOW BARBED
9	385311112	KIT, GROMMET SEALING $\frac{3}{4}$ "



Dometic Corporation - Sanitation Systems
13128 State Rt. 226, P.O. Box 38
Big Prairie, OH 44611-0038 USA
Telephone: 330-496-3211
Fax: 330-496-3097
Email: sealand@dometicusa.com