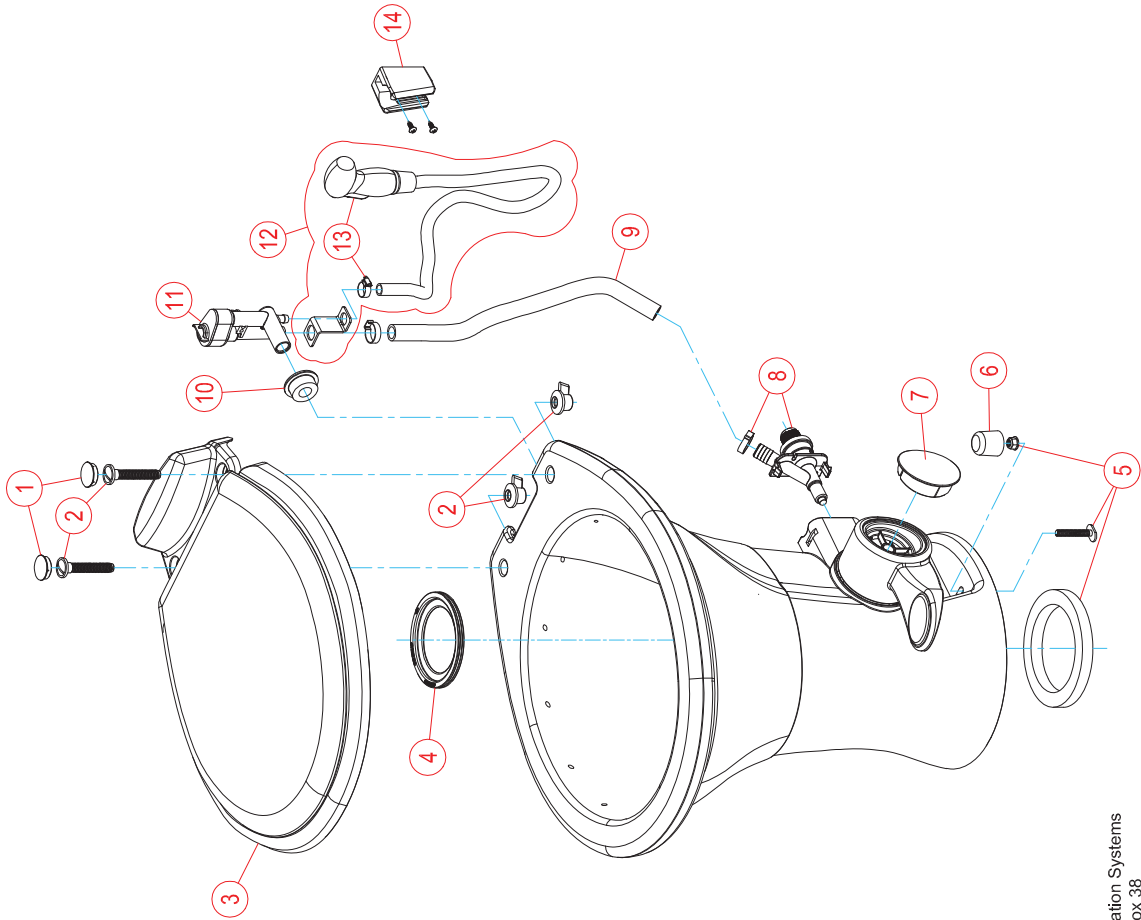


PARTS LIST: 310 TALL GRAVITY FLUSH TOILET

ITEM	PART NUMBER & DESCRIPTION
1	385311648 SEAT/COVER MTG BRKT - WHITE 385311649 SEAT/COVER MTG BRKT - BONE
2	385311650 SEAT/COVER MTG HARDWARE-WHITE 385311651 SEAT/COVER MTG HARDWARE-BONE **INCLUDES ITEM 1
3	385311646 SEAT/COVER REPLACEMENT - WHITE 385311647 SEAT/COVER REPLACEMENT - BONE **INCLUDES ITEM 1 & 2
4	385311658 FLUSH BALL SEAL
5	385311652 MOUNTING HARDWARE/SEAL - WHITE 385311653 MOUNTING HARDWARE/SEAL - BONE **INCLUDES ITEM 6
6	385311654 FLOOR BOLT CAP - WHITE 385311655 FLOOR BOLT CAP - BONE
7	385311656 PEDAL COVER - WHITE 385311657 PEDAL COVER - BONE
8	385311641 WATER VALVE KIT
9	385340177 WATER SUPPLY HOSE - WHITE 385345377 WATER SUPPLY HOSE - BONE **INCLUDES CLAMPS
10	385311164 1/2" SEALING GROMMET
11	385230335 VACUUM BREAKER KIT w/HAND SPRAY 385316906 VACUUM BREAKER KIT **INCLUDES ITEM 10
12*	385319054 HAND SPRAY KIT w/VAC BREAKER - WHT **INCLUDES ITEMS 10, 11 & 13
13*	385311124 HAND SPRAYER - WHITE **INCLUDES ITEM 14
14*	385230319 HAND SPRAY BRACKET w/SCREWS-WHT

* ITEMS 12, 13, & 14 ARE OPTIONAL ACCESSORIES;
NOT PROVIDED WITH EVERY MODEL.



Dometic Corporation - Sanitation Systems
13128 State Rt. 226, P.O. Box 38
Big Prairie, OH 44611-0038 USA
Telephone: 330-496-3211
Fax: 330-496-3097
Email: sealand@dometicusa.com